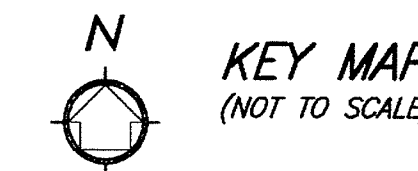
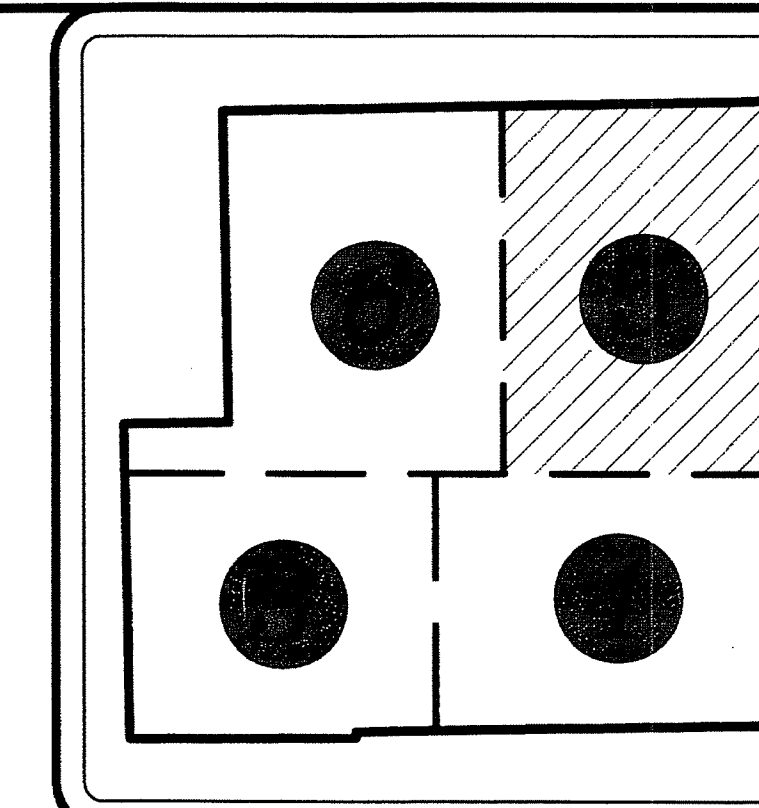


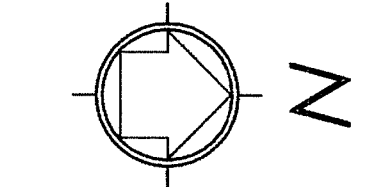
# DELRAY MARKETPLACE, REPLAT NO. 1

BEING A REPLAT OF A PORTION OF TRACT B, DELRAY MARKETPLACE PRESERVE 3, ACCORDING TO THE PLAT THEREOF, AS RECORDED IN PLAT BOOK 111, AT PAGE 95 THROUGH 97 INCLUSIVE, AND ALL OF DELRAY MARKETPLACE, ACCORDING TO THE PLAT THEREOF, AS RECORDED IN PLAT BOOK 115, AT PAGE 19 THROUGH 26 INCLUSIVE, OF THE PUBLIC RECORDS OF PALM BEACH COUNTY, FLORIDA. SAID LANDS LYING AND SITUATE IN SECTIONS 17 AND 18, TOWNSHIP 46 SOUTH, RANGE 42 EAST, PALM BEACH COUNTY, FLORIDA.

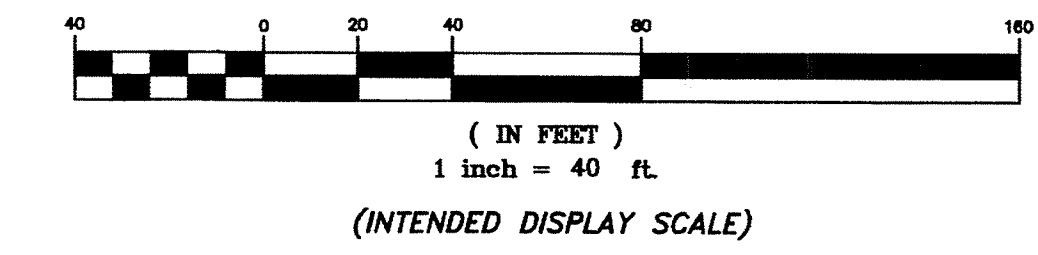
State of Florida }  
County of Palm Beach } SS  
THIS PLAT WAS FILED FOR RECORD AT \_\_\_\_\_ M.  
THIS \_\_\_\_\_ DAY OF \_\_\_\_\_ A.D. 2016 AND DULY RECORDED  
IN PLAT BOOK \_\_\_\_\_ ON PAGES \_\_\_\_\_ THROUGH \_\_\_\_\_  
SHARON R. BOCK  
CLERK AND COMPTROLLER  
BY: \_\_\_\_\_  
DEPUTY CLERK  
SHEET 5 OF 7 SHEETS



KEY MAP (NOT TO SCALE)



GRAPHIC SCALE



- LEGEND:**
- CCR = CERTIFIED CORNER RECORD
  - DE = DRAINAGE EASEMENT
  - LAE = LIMITED ACCESS EASEMENT
  - LB = LICENSED BUSINESS
  - ORB = OFFICIAL RECORDS BOOK
  - PB = PLAT BOOK
  - PBCUE = PALM BEACH COUNTY UTILITY EASEMENT
  - PBCWUE = PALM BEACH COUNTY WATER UTILITY EASEMENT
  - PG. = PAGE
  - PRM = PERMANENT REFERENCE MONUMENT
  - R/W = RIGHT-OF-WAY
  - ① = SHEET NUMBER
  - = FOUND OR SET 4"x4" CONC. PRM & ALUMINUM CAP STAMPED "LB 7055 PRM" EXCEPT AS NOTED.
  - UE = UTILITY EASEMENT

